

# Cefn Mawr Quarry

## Site Biodiversity Action Plan



Prepared: November 2011

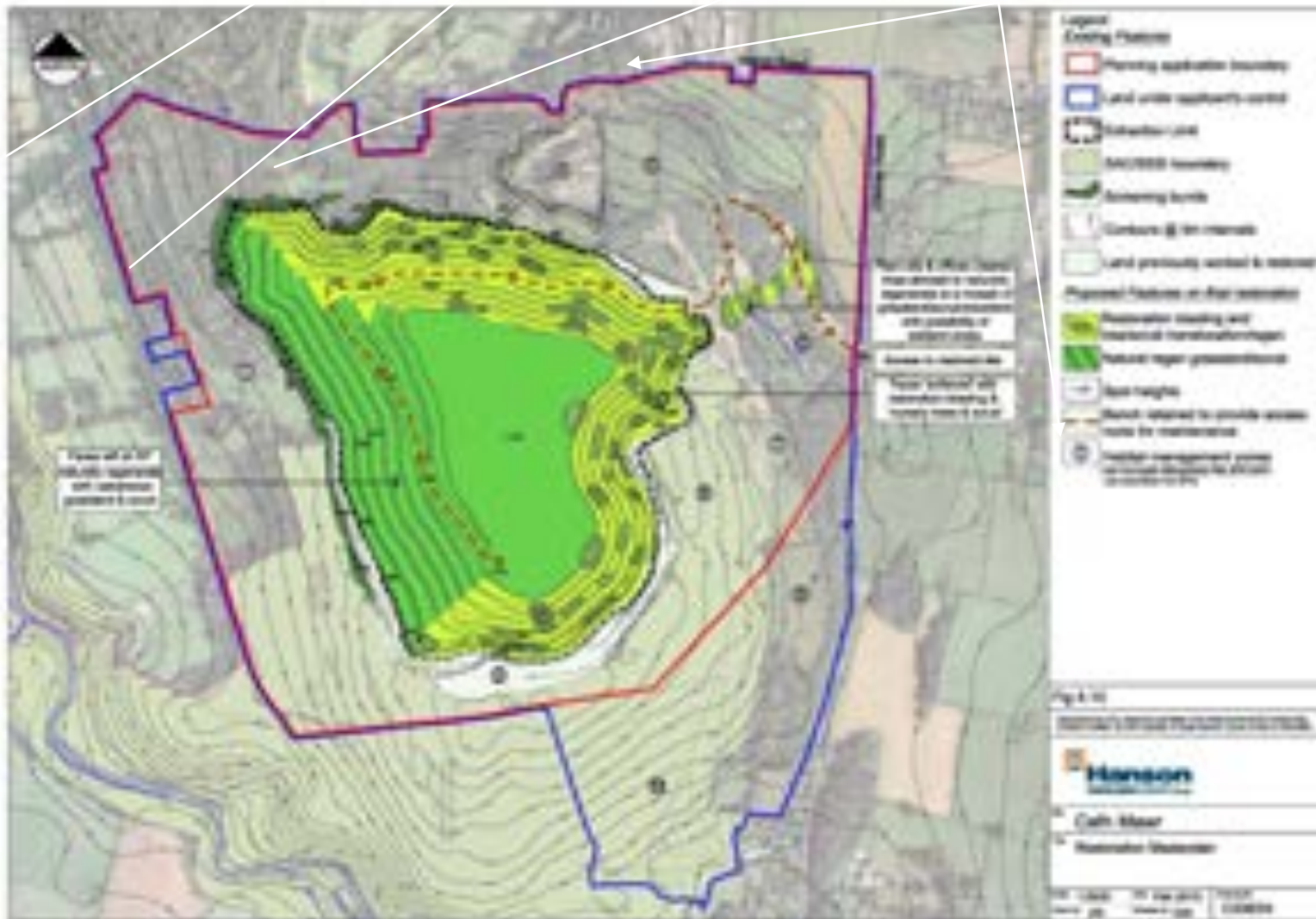
Updated: December 2013

**Site Information- Cefn Mawr**

<b>Site Name and Location (incl. Grid Ref.)</b>	<b>Cefn Mawr Quarry</b> , Pantybuarth, Mold SJ 199 635 centre of site
<b>Hanson Company</b>	Hanson Cement
<b>BAP(s) that will be targeted</b>	UKBAP Flintshire BAP Denbighshire BAP
<b>Habitat(s) to be developed</b>	Broadleaved Woodland (Flintshire, Denbighshire) Hedgerows (Flintshire) Calcareous grassland and limestone pavement (Denbighshire) Ponds (Denbighshire)
<b>BAP species to be encouraged</b>	Badgers (Flintshire) Hedgehog (Flintshire, Denbighshire) Brown hare (Flintshire, Denbighshire) Fritillaries (Flintshire, Denbighshire) Reptiles (Flintshire, Denbighshire) Bats (Flintshire, Denbighshire) Grizzled Skipper (Denbighshire) Song Thrush (Denbighshire) Bullfinch (Denbighshire) Tree Sparrow (Denbighshire)
<b>Designated Natural Area</b>	None in wales however site is within the Clywdian Range AONB
<b>Background and site description</b>	<p>Cefn Mawr Quarry is a limestone quarry (Lower Carboniferous, Cefn Mawr and Loggerheads Limestone Formations) located west of Mold in North Wales, between the villages of Pant-y-buarth and Cadole</p> <p>The majority of the extracted limestone supplies the cement-making process at Hanson Cement, Padeswood, Mold, which in turn supplies the building and development sector. A biodiversity audit (commissioned by HiedelbergCement) was carried out on the site in 2008 which identified the ecological features of the site. Extraction activities have led to the formation of artificial features within the quarry that mimic those found in the natural landscape, such as rocky coastal cliffs, upland scree slopes and limestone pavement. Broadleaved woodland, species-rich calcareous grassland and ponds are present, all of which are UKBAP priority habitats.</p> <p>Statutorily-protected species (e.g. bats and badgers) are found on the site and some species present are listed on the UK, Flintshire and Denbighshire BAPs (e.g. Fritillaries). Nationally scarce plants such as Green-flowered Helleborine, Spring Sandwort and Stinking Hellebore are also present.</p>
<b>National Designations (SSSI, SAC, SPAs, RAMSARs and NPs) within 500m</b>	Alyn Valley Woods and Alyn Gorge SSSI within site Alyn Valley Woods SAC within site Clywdian Range and Dee Valley AONB within site
<b>Resource Requirements-</b>	Restoration budget. Some land falls within SSSI/SPA/SAC designation and requires annual costs for management

<b>comment on cost if appropriate</b>	(consultation is carried out with NRW as appropriate). Implementation of the Cefn Mawr Ecological Management Plan 2011-2016) is ongoing.
<b>Contribution to biodiversity</b>	Expansion of UK/LBAP priority habitat ' <i>Unimproved calcareous grassland</i> ' through annual scrub and bracken management providing further habitat for UK/LBAP butterflies (Fritillaries).  Expansion and management of ponds (UKBAP priority) providing habitat for invertebrates and also for Common Toad (UKBAP priority).  Contribution to Ecosystem Services.
<b>Partners and Local initiatives</b>	Natural Resources Wales
<b>Other documents supporting the site BAP</b>	Cefn Mawr Quarry Biodiversity Study 2008 (2009) Cefn Mawr Quarry Ecological Management Plan 2011 -2016

# Site Layout



## Action Plan

Item No.	Objective	Biodiversity Feature	Targets	Tasks	Assessing Indicator	Responsible Person	Timescale (Completion)
1	Restore important habitats	(A) Unimproved calcareous grassland/limestone pavement ( <i>Denbighshire BAP</i> )	Control bracken dominated areas  Increase and maintain calcareous grassland	1.Bracken spraying to be carried out end of July annually  2.Sheep grazing commencing late summer (Aug) Annual scrub removal carried out in autumn (Sept)	Area of calcareous grassland increased (ha)	Site Manager/ Consultant Ecologist	Report annually for life of site
		(B) Ponds ( <i>Denbighshire BAP</i> )	Increase area of open water  Increase area of open water available in large drainage pond (south of crusher plant)	1.Join two small ponds to provide larger body of water for breeding amphibians and invertebrates  2.Partial removal of Reedmace to provide balance of open water to marginal vegetation (Aug/Sept)	Area of open water created (ha)	Site Manager/Landscape Architect/ Consultant Ecologist	Report annually for life of site
		(C) Broadleaved woodland ( <i>both Denbighshire and Flintshire BAPs</i> )	Removal of invasive non-native species	1. Identify and mark species to be removed (e.g. Sycamore). Remove outside main bird-breeding season (e.g. Sept – Feb)	Non-native/invasive trees removed (no.)	Consultant Ecologist	Report annually for life of site
		(D) Hedgerows ( <i>Flintshire BAP</i> )	Create new hedgerow (approx 50m)  Maintenance of existing hedges	1.New hedge to be planted at eastern border (base of slope) to provide stock-proof barrier and wildlife habitat.  Maintenance of all hedges to be carried out outside main bird-breeding season (i.e.	New hedge planted (m)	Landscape Architect	

				Sept – Feb)			
<b>2</b>	<b>Protect species</b>	Bat  Reptiles	Maintain habitat suitable for Bat populations	1. Monitor condition of bat boxes on site and replace/repair as necessary.  2. Create opportunities for additional features for reptiles during site development	Boxes monitored annually.  Annual reptile surveys	Consultant Ecologist	Report annually for life of site
<b>3</b>	<b>Encourage rare species</b>	Fritillaries Grizzled Skipper Wall Brown Small Heath  Scarce plants	Enhance areas for potential new colonies  Maintain scarce plant populations	1. Create stepping stone glades to encourage expansion of species (especially GS). Monitor through annual walkover surveys  2. Monitor through annual surveys.	No. of colonies/populations. Count of individuals.	Landscape Architect/Consultant Ecologist	Report annually for life of site
<b>4</b>	<b>Consult with NRW</b>	Calcareous grassland and broadleaved woodland management/restoration	Maintain regular contact with NRW.	1. Consultation with NRW.	Annual meeting between Hanson and NRW	Site Manager/Landscape Architect/Consultant Ecologist	Annually