

Legend

Planning Boundary

3 km

Distance from Site Boundary

Landscape Character

4

Eastern Lowland Plain
Landscape Character Area 4
(Flintshire Landscape Strategy 1996)

5

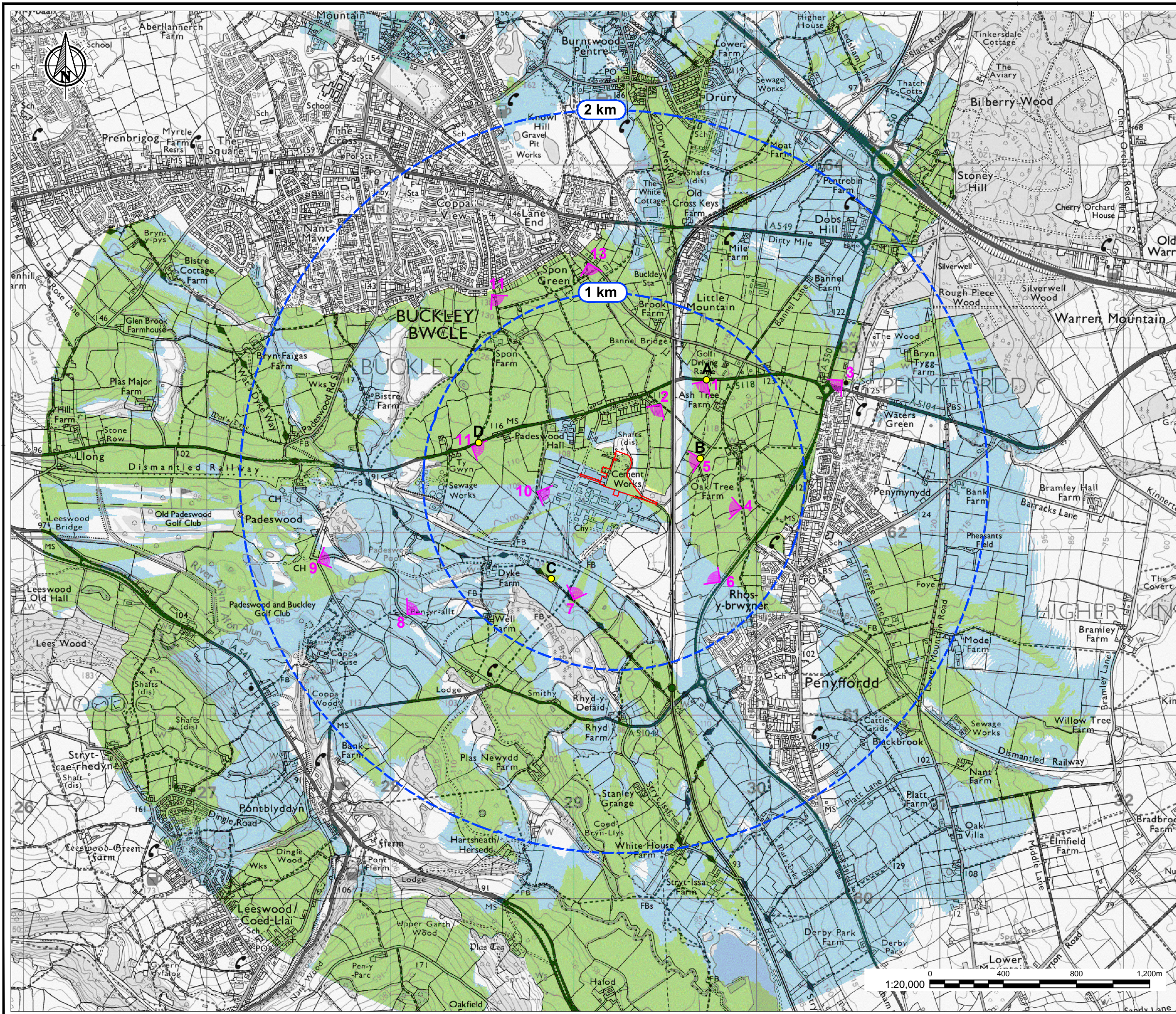
Buckley Lowland Hills
Landscape Character Area 5
(Flintshire Landscape Strategy 1996)

FCC Landscape Character Area Boundary

Low: (Little or No Importance)Moderate: (Local Importance)High: (Regional /County Importance)Outstanding: (International or National Importance)

**DRaW**
Design & Assessment

DRaW (UK) Ltd
Morwick Hall
York Road
Leeds
LS15 4TA
t: 0113 8232871
e: info@draw-uk.com
www.draw-uk.com



Legend

- Planning Boundary
- 1 km Off-sets from the Site Boundary
- Viewpoint Locations
- Photomontage Locations

Zone of Theroetical Visibility

- Proposed Cement Mill and Rail Loading Facility
- Existing Cement Works

ZTV Parameters

Zone of Theoretical Visibility is generated using 'OS Terrain 5' (digital terrain data at 5 m resolution), assuming the following heights:


- Existing buildings ranging from 10-110m
- Proposed buildings and structures up to 46m

The heights of existing structures within the cement works have been interpreted from OS Master Map. Heights of surrounding vegetation have been estimated, using a combination of online imagery and field observations.

Visual barriers less than 5 m high have not been modeled.

The ZTV identifies those areas from which the development would be theoretically visible. Due to the frequency of low-level structures and vegetation the actual visibility should be significantly less extensive than the drawing indicates.

© Crown copyright and database rights 2017 Ordnance Survey 0100031673

Client					GOLDER ASSOCIATES	
Project					PADESWOOD CEMENT WORKS MILL 5	
Title					ZONE OF THEORETICAL VISIBILITY EXISTING & PROPOSED	
Size	Scale	Date	Created by	Reviewer		
A3	1:20,000	10.03.17	CD	NR		
Drawing No.				Rev		
04				B		
			DRaW (UK) Ltd Morwick Hall York Road Leeds LS15 4TA t: 0113 8232871 e: info@draw-ltd.com www.draw-ltd.com			
DRaW Design & Assessment						